

NEW MRI SCANNERS AT 101 REMUERA ROAD AND 212 WAIRAU ROAD

ARG is very pleased to announce that the first quarter of 2015 has seen the installation of the latest technology 1.5T MR Scanners at each of our two MRI sites, complimenting the 3T Scanners at both our 101 and Northern Clinic rooms.

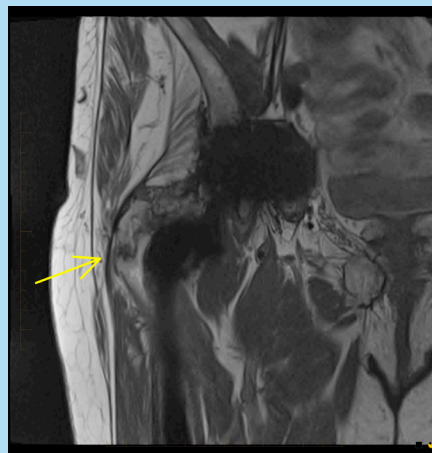
These new scanners are designed to increase patient comfort with industry leading wide bores (70cm) significantly reducing claustrophobia and allowing more positioning options. There is reduced scanner noise and excellent scan room acoustics all of which optimise the patient experience.

The advances in clinical applications include:

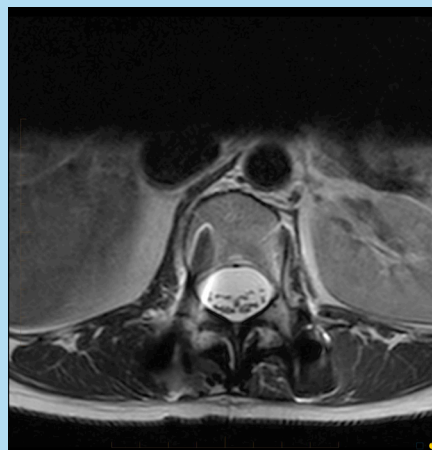
- A marked improvement in overall image quality
- New metal artefact reduction techniques
- Cartilage mapping
- Contrast and non-contrast MR angiography
- Advanced dynamic contrast of the prostate
- Whole body diffusion for oncology patients with comparable utility to scintigraphy and PET/CT

There are unique benefits to pairing high quality 1.5T and 3T scanners on the same site as they are often complementary. There are a number of scenarios where these synergies are crucial, for example 3T scanners perform badly when there is metalware in situ, and the flexibility to swap the patient to and from the 3T to 1.5T magnet salvages what was previously non-diagnostic imaging.

MRI IMAGING ADVANCES



Coronal T1 weighted hip images with a total hip arthroplasty in situ. The use of latest metal artefact reduction techniques show in a marked improvement in detail around the implant, including the detection of a greater trochanter fracture (arrow) not shown on plain radiographs or conventional MRI.



Sagittal and axial T2 weighted lumbar spine images with posterior fusion metalware in situ, with excellent detail of the spinal canal and nerve roots.

MRI IMAGING ADVANCES CONT...



Coronal T2 Weighted scan of the cervical region showing exquisite cervical plexus detail.



MR Enterography which allows high definition imaging of the small bowel and colon, particularly useful in imaging of inflammatory bowel disease.

CT SCANNING AT NORTHERN AND 101

ARG offers CT scanning with the latest low dose technology at both 101 Remuera Road and the Northern Clinic, and scintigraphy (including SPECT) at 101. Both of the new CT scanners at ARG have Adaptive Statistical Iterative Reconstruction (ASiR), an image reconstruction technique that enables dose reduction up to 40-50%. ARG continues to align to the ALARA (As Low As Reasonably Achievable) practice that aims to limit patient's x-ray exposure as much as possible. Unlike conventional dose reduction techniques like collimators and mA modulation, the benefits of ASiR are universal, independent of patient size or anatomic region.

INTERVENTIONAL PROCEDURES NOW AVAILABLE AT NORTHERN CLINIC

The expansion of our Wairau Road Clinic with a second ultrasound room means we can now offer outpatient interventional radiology procedures, such as FNA and core biopsy, at the Northern Clinic in addition to at 101.

BODY COMPOSITION SCANS AT HENDERSON

Body composition scans are now available at our Henderson branch and provide accurate measurements of body fat, lean muscle and bone. They are an effective tool in weight loss monitoring and personal training regimes.

INCREASED ULTRASOUND CAPACITY

New ultrasound rooms have been opened at:

- Henderson
- Avondale
- Pukekohe

REFERRALS

Referrals for MRI, CT and scintigraphy can be emailed directly to our appointments team at bookings@akradiology.co.nz

NEW ZEALAND IMMIGRATION ONSHORE PANEL PHYSICIAN NETWORK

The branches below are part of the Onshore Panel Physician Network, which means from the 1st of July these are the ARG Branches able to perform chest xrays for New Zealand Immigration Applications.

• 101 Remuera Road	09 529 4850	101-Reception@akradiology.co.nz
• Queen Street	09 357 0515	QueenSt@akradiology.co.nz
• Howick	09 535 6084	Howick@akradiology.co.nz
• Papakura	09 298 4106	Papakura@akradiology.co.nz
• Ti Rakau	09 273 8984	TiRakau@akradiology.co.nz